

# F/A 18 HOTAS STICK

How to install the new WSS button

Required tools: Allen key



5077807

- 1) Unscrew the 3 Allen screws and the caoutchouc ring shown on the pictures:



Longer screw

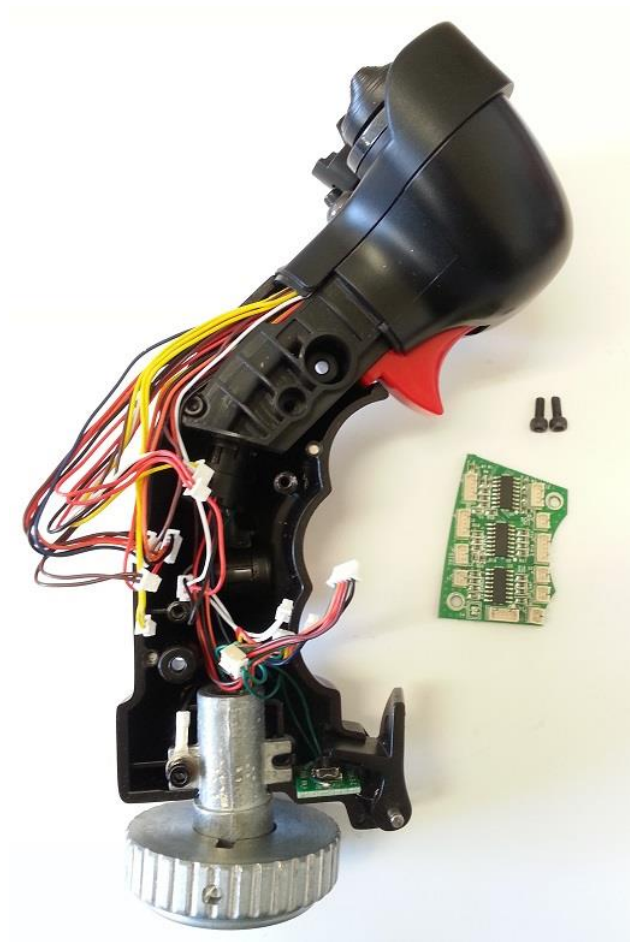


**2) Take off the casing part**

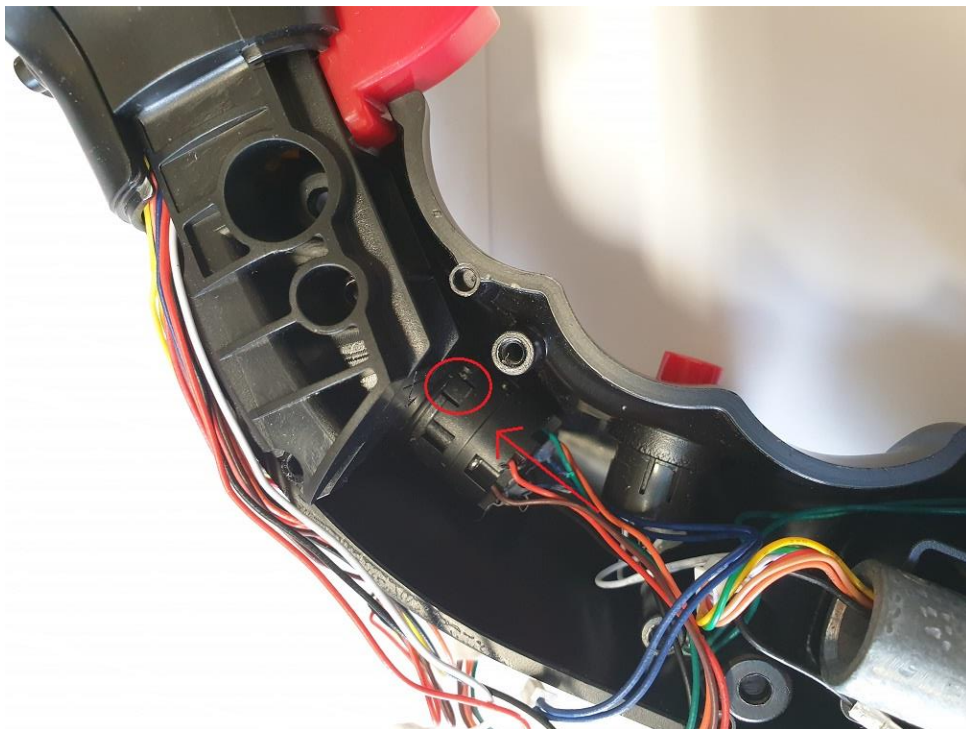


**3) Disconnect all the 12 connectors and unscrew the 2 Allen screws shown on the picture:**

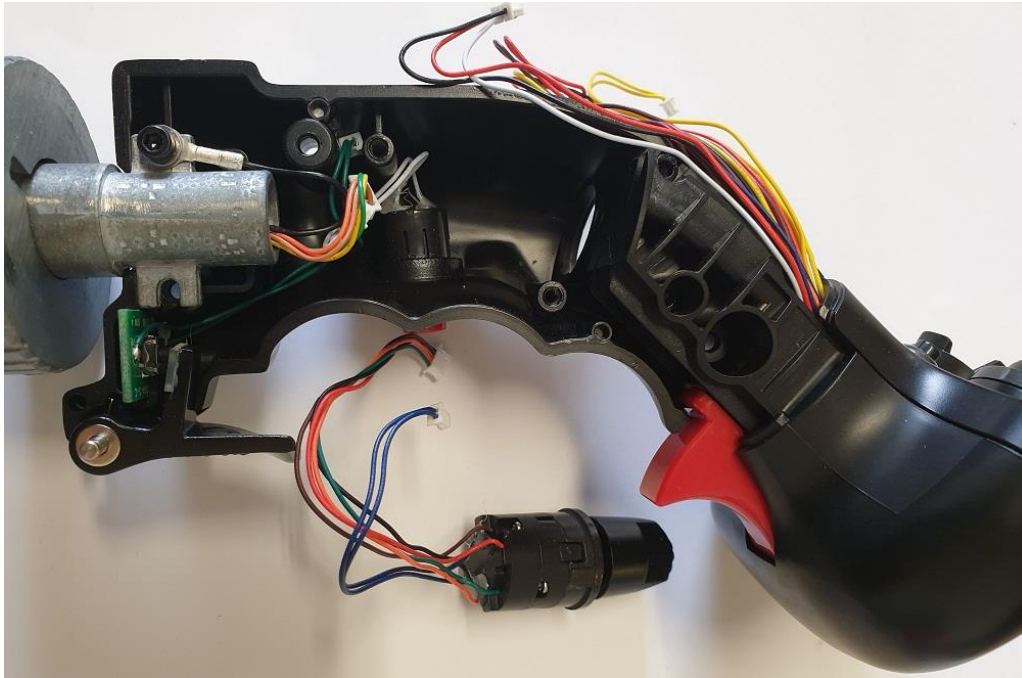




- 4) Take off the button from its location by pushing the strip (shown on red circle) and pushing it in the direction of the arrow shown on the picture:



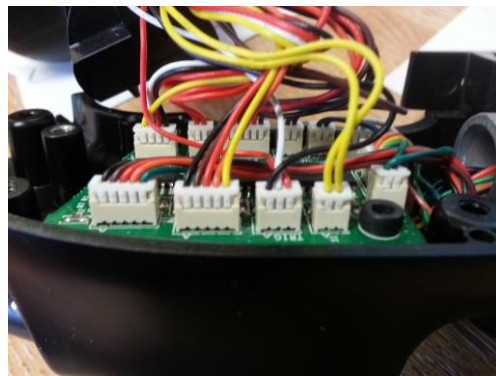
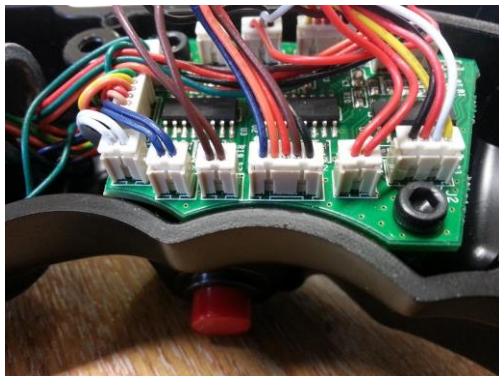




**You can now place the new WSS button and reassemble the product by following this procedure in reverse order.**

---

*Here are pictures showing the position of each connector on the main pcb*



*Here are some pictures showing how to mount the Paddle Switch in case it falls off during the operation.*

